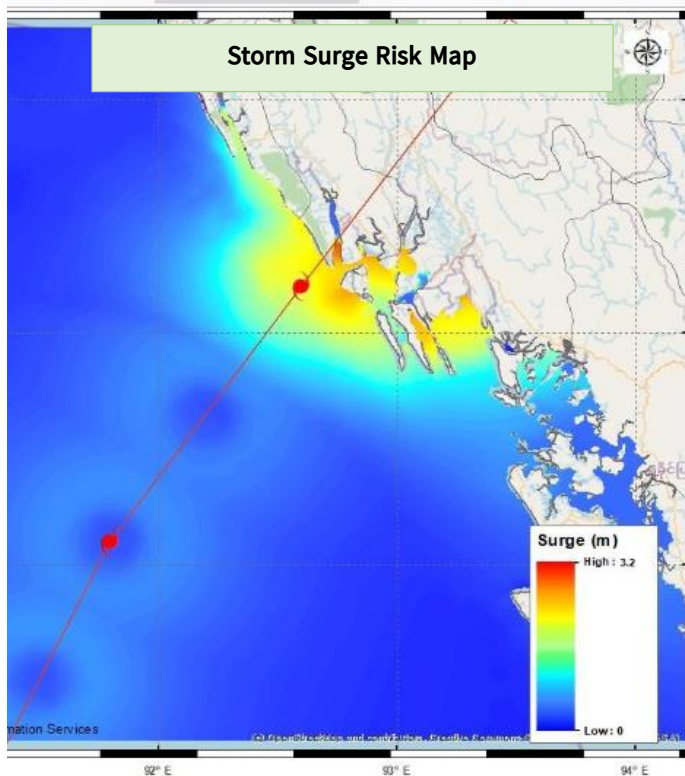




The Republic of Union of Myanmar
National Unity Government
Ministry of Humanitarian Affairs and
Disaster Management
mohadm@nugmyanmar.org



Situation Report on the Super Cyclone MOCHA's Emergency Response



Highlights

A Low Pressure Area formed over Southeast Bay of Bengal and adjoining Andaman Sea on 8th May, 2023 has intensified gradually into Extremely Severe Cyclonic Storm “Mocha” and made landfall over Rakhine coast near Maungdaw and Sittwe Towns with the windspeed of (110) mph to (120) mph on 14th May in the morning. Mocha cyclone has triggered heavy rains, strong wind, landslide, storm surge and increase of water level in the rivers in Rakhine, Chin, Shan, Sagaing, Magway, Yangon and Ayeyarwaddy.

Cyclone Wind-speed Scale

Tropical Cyclone Wind-speed Scale

Strength	Category	1 Minute Maximum Sustained Winds		
		knots	mph	km/h
Tropical Depression	TD	<34	<39	<63
Tropical Storm	TS	34-63	39-73	63-118
Severe Cyclonic Storm	Cat 1	64-82	74-95	119-153
Severe Cyclonic Storm	Cat 2	83-95	96-110	154-177
Severe Cyclonic Storm	Cat 3	96-112	111-129	178-208
Super Cyclonic Storm	Cat 4	113-136	130-156	209-251
Super Cyclonic Storm	Cat 5	>136	>156	>251

Initial Damages and Losses

As the MPT telecommunication tower was broken down by the strong winds, communications are currently cut off in Sittwe. Due to the initial reports, some of the long-living trees were fallen and the roofs of some houses were destroyed in Sittwe, and about 50 houses from Shwe Oo Kinn Village near Kantharyar in Gwa Township and 23 houses in Taungtwingyi in Magway were also damaged. In this evening of May 14, strong winds and rough seas are occurring in 7 townships in Rakhine State where Red Alert was issued. Destruction of Refugee Camps was also happened in Cox's Bazar, Bangladesh.



In the meantime, it is informed that 5 people are dead, and several people are injured in Rakhine State, Shan State, Mandalay Region and Ayeyarwaddy Region because of cyclonic storm MOCHA and its subsequent impacts. In Kani Township in Sagaing Region, besides the military junta's troops raiding the villages, the heavy rain for 3 consecutive days resulted in the illness of the displaced communities. As the electricity and internet access were shut down in many Townships in Magway, Sagaing and Chin, the IDPs are facing the difficulties to access the information and humanitarian provisions.


Within 24 hours following the landfall, storm surges and heavy rains in Rakhine State, landslides in Chin State, lightning and thunderstorms in Bago, Yangon and Ayeyarwaddy regions may occur.

Emergency Response Measures

Initial damage and loss assessment and need assessments are underway through coordinated activities with the Stakeholders from Rakhine State, Chin State, Sagaing Region and Magwe Region which are experiencing the severe impacts of the Super Cyclone. Moreover, NUG has called on Humanitarian Assistance and Disaster Response Commission with the leadership of the Acting President to respond the Super Cyclone MOCHA. With the Commission's decisions, Emergency Operation Coordination Committee has been activated in collaboration with the relevant Ministries, Consultative Councils and relevant organizations from respective States and Regions. Cyclone Contingency Fund of USD 1 million was allocated for emergency response and effective utilization of the tax revenues collected in Sagaing and Magway regions on humanitarian processes are also taken into consideration. The Emergency Operation Coordination Committee (EOCC) was activated on 13th May 2023, and is operating on 24/7 basis for emergency response actions. Mocha Cyclone Emergency Response Plan was developed covering 5 main clusters relating to Food

Security and Nutrition, Water, Sanitation and Hygiene (WASH), Shelter, Health, and Protection, and at the present, coordination with international community has been in place to seek for international humanitarian support.

The Ministry of Humanitarian Affairs and Disaster Management of the National Unity Government has been issuing regular weather forecasts since May 4 before the depression




မုန်တိုင်းသတိပေးကြေညာချက်

လက်ရှိဖြစ်ပေါ်နေသော မိုချာ ဆိုက်ကလုံးမုန်တိုင်းသည် လာမည့်နာရီပိုင်းအတွင်း စစ်ကိုင်းတိုင်း၊ အောက်ပိုင်းသို့ တစ်နာရီလျှင် မိုင်၆၀/၇၀နှုန်းဖြင့် ဝင်မည်ဟု ခန့်မှန်းထားကြသဖြင့် မိဘပြည်သူများအနေဖြင့် အခိုင်အမာတည်ဆောက်ထားသော အဆောက်အအုံများ၊ ဘုန်းကြီးကျောင်းများ၊ ဘေးကင်းလုံခြုံစိတ်ချရသော နေရာများတွင် ရွှေ့ပြောင်းနေထိုင်ကြရန်၊ မိုးလေဝသ သတင်းအားအမြဲမပြတ် စောင့်ကြည့်ကြရန်၊ မုန်တိုင်း အပြီးပျက်စီးထိခိုက်မှုများ ရှိပါက သက်ဆိုင်ရာ တာဝန်ခံများထံ အမြန်ဆုံး အကြောင်းကြားရန် အသိပေးကြေညာအပ်ပါသည်။

မြင်းမူမြို့နယ်ပြည်သူ့အုပ်ချုပ်ရေးအဖွဲ့

**Early Warning issued by
Local Administrative Body**



မိုးရာသီကာလတွင် ပြည်သူများအနေဖြင့် သတိပြုလိုက်နာဆောင်ရွက်ရန် အသိပေးပန်ကြားခြင်း

မြေပြိုသွား



မြေပြိုနေသောနေရာအနီးသို့ သွားရောက်ခြင်းမှ ရှောင်ကြဉ်ပါ။



မြေပြိုထားသော ပတ်ဝန်းကျင်၊ အဆောက်အအုံ၊ လျှပ်စစ်ဇိမ်ကြိုးပေါ် အနီးသို့ သွားရောက်ခြင်းမှ ရှောင်ကြဉ်ပါ။



မြေပြိုခြင်းနှင့်အတူ ရေလွှမ်းမိုးခြင်း၊ ရွှံ့မြေ နုန်းမြေများ ပြိုကျစီးဆင်းလာခြင်းတို့ ဖြစ်ပေါ်တတ်သဖြင့် ဝရံပြုနေထိုင်ပါ။

Photo: UN/WHO

was formed, including forecasts of the potential cyclone track and the different stages of the cyclone formation, and issuance of cyclone early warnings. In addition, the Ministry is providing emergency food and shelter support to people fleeing due to the military operations even in heavy rain and wind, as well as to long-term IDP camps in Sagaing,

Magway and Cox's Bazar. Immediately after the cyclone passed, Cyclone Emergency Preparedness Kits have been distributed to 140 vulnerable families in the Rohingya refugee camps in Cox's Bazar through Rohingya Community Based Organizations, Besides,



**Cyclone Emergency preparation
In the Rohingya refugee camps, Cox's Bazar**

dissemination of early warning messages to the local communities on Super Cyclone MOCHA, and emergency evacuation have been carried out by the local administrative bodies in the townships where Interim Public Administration is in place.

Contacts for donation of MOCHA cyclone emergency response

1. CNF
Signal: +91 87985 65564 Email: theetni@gmail.com
2. Chin MOCHA cyclone emergency response team
Signal: +95 9 954 633936 Email: icncc.mocha@gmail.com
3. Ministry of Humanitarian Affairs and Disaster Management
Signal: +66 97 089 0918 Email: mohadm@nugmyanmar.org
4. Rakhine Rescue team
Signal: +66 64 193 6300 Email: arakanheritagefoundation@gmail.com