

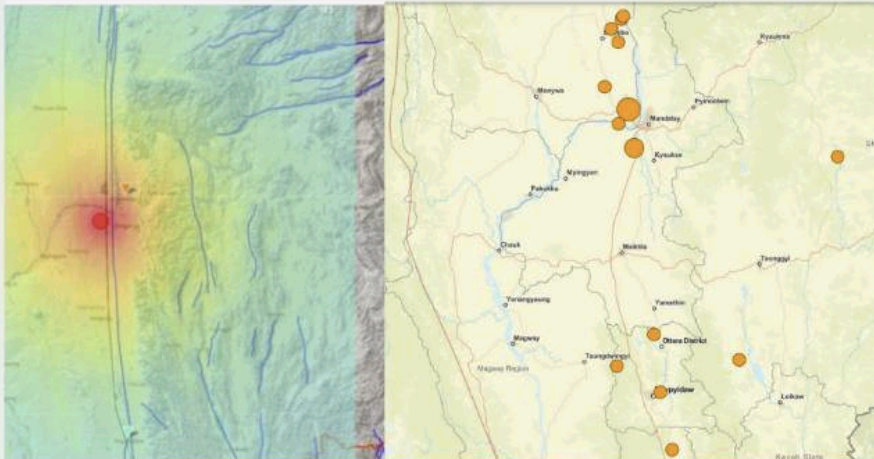
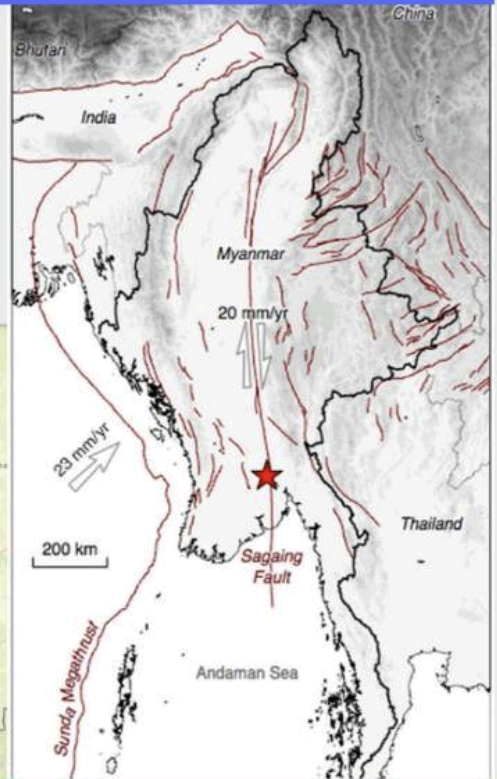


Initial Situation Report (1) on the Impacts of A Very Severe Earthquake in Sagaing

March 29, 2025

Summary

There was a very severe earthquake with magnitude of 7.7 near Sagaing Township, Central Myanmar around 12:50pm, on 28th March 2025. Following this powerful earthquake, there were total 13 major aftershocks being reported which were above 4 Richter scale alongside the areas near the Sagaing fault as of 9:00 am of 29th March. The hardest-hit regions by the earthquake were Mandalay, Sagaing, Bago, Nay Pyi Taw and Shan state. Search and rescue operations are in progress, and emergency health care, clearance of debris, electricity and communication sectors see many challenges. Due to significant damages, Naypyidaw and Mandalay international airports are temporarily closed.



Impacts of the Severe Earthquake



469+



223+



1822+



30+



2970+



7+



5+



95+



50+

Challenges and Emergency Needs

Major challenges include lack of sufficient and proper equipments to search and rescue the missing people in the earthquake, limited resources and facilities in providing emergency medical treatment at the hospitals due to a large number of injured individuals, the shortage of medicines and medical equipment, and the overwhelming workload on the rescue teams, healthcare professionals, and civil society organizations. There has been widespread anxiety and panic among the local residents due to the subsequent aftershocks. The challenges in firefighting operations caused by the earthquakes led to an increase in unintended losses. Furthermore, focal departments controlled by military junta failed to properly inform the public, and it is necessary to deliver accurate information about the strength and safety of dams to the general public.

There is a need for heavy machineries to clear the debris and remove damaged materials. Medicines and facilities, ready-to-eat meal, solar-powered lamps, temporary shelters, fire extinguishers, family kits and psychological counseling to the earthquake-hit people are urgently needed. The repairing and reconstruction of homes and basic infrastructure require technical expertise and financial resources. We are deeply grateful for the international rescue teams being deployed and humanitarian aid that have been pledged to support by the friendly countries, and we urge the generous donors to ensure that all assistance be provided fairly and equally to all those are affected by the devastating earthquake. We also express our gratitude to each and every organization involved in the rescue and relief efforts.

For more information:
mohadm@nugmyanmar.org

