

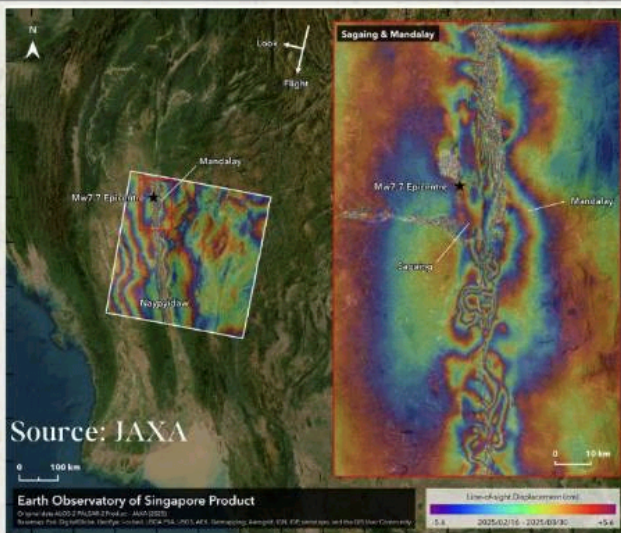


Situation Report (4) on the Impacts of A Very Severe Earthquake in Sagaing

April 2, 2025

SUMMARY

A very severe earthquake with magnitude of 7.7 originated in the Sagaing region has caused major losses across 47 townships. Among these, the worst-affected areas are the townships in Mandalay, Amarapura, Naypyidaw, Sagaing, and Tada U, as well as Nyaung Shwe in Shan State. Because of the Sagaing earthquake, a total population of around 8,869,561 from Mandalay Region, Sagaing Region, Naypyidaw, Bago Region, Southern Shan State, and Karreni State have been directly impacted. Initial assessments indicate that efforts are underway to carry out dead bodies management, clear debris, provide emergency healthcare, and humanitarian assistance, however, there are still many challenges and evolving needs. As of today, the Ministry of Humanitarian Affairs and Disaster Management of NUG received approximately 1.7 billion kyat in donations from both local and international donors for earthquake relief interventions. Emergency support funds totaling 679,200,000 kyat as well as 120 million kyat in food aid, total of 799,200,000 MMK in relief assistance are currently being distributed to 2,239 households from three affected regions and one state. The remaining areas will also be supported accordingly.



CHALLENGES ENCOUNTERED

Due to the limitations to access international search and rescue teams, emergency response operations are being carried out by self-arrangement in major earthquake-hit areas, and many damages remain due to the lack of technology and machinery. The military and their security forces have restricted access to many areas, resulting in difficulties in conducting assessments, relief support, and coordination efforts. Earthquake affected victims face significant challenges to obtain food and shelter because of the military's restrictions on transportation and communication and are not receiving support from the emergency response organizations under military control. Extreme heat during the daytime in these areas, lack of proper rest, insufficient shelter, toilets and the inadequate disposal of waste in areas where displaced people are temporarily sheltering, as well as in hospitals, may lead to health related problems. The inability to clear the dead bodies has led to foul odors, and dust in the air may cause problems related with respiratory infections.



EMERGENCY NEEDS

When handling the corpses, it is recommended to use safety gloves and masks, and also to treat the areas with human remains by applying Aseptol and bleaching powder to prevent possible infectious diseases. Mobile medical teams are urgently in need for the elderly, pregnant women, persons with disabilities, and others who need special care to access treatment and medical care. Due to the potential geological hazards following the severe earthquake, it is necessary to undertake field surveys and analysis, raise public awareness, and implement preventive measures. During the coming weeks, with the arrival of monsoon and temperature changes occurred, strong winds in the central area could bring more challenges, therefore, accessing to safe shelters is essential to earthquake-hits civilians as a main priority. Additionally, it is important to implement effective resettlement and reconstruction programs for the populations affected not only by the earthquake but also by fire incident following earthquake. In this regards, extensive support from both domestic and international organizations is needed to carry out these efforts.

<p>Contacts</p> <p>1. Ministry of Humanitarian Affairs and Disaster Management Email: mohadm@nugmyanmar.org</p> <p>2. Ministry of Foreign Affairs Email: mofa@nugmyanmar.org</p> <p>3. Press office Team Signal: (+1) 332-240-3557 Email: pst@nugmyanmar.org</p>	<p>Family tents</p> <p>Water Purifiers</p> <p>Solar bulbs</p> <p>Hand-held torches</p> <p>Masks</p> <p>Gloves</p>	<p>Paracetamol</p> <p>ORS</p> <p>Effervescent tablets</p> <p>Ointments for wounds</p> <p>Insect repellent ointments</p> <p>Ointments such as Diclo gel</p>
---	---	--